

**Subject:** FW: Top Shelf - Premium Drinks Festival returns for 2015  
**Date:** Thursday, 15 January 2015 2:06:48 pm Australian Eastern Daylight Time  
**From:** Janette Illingsworth  
**To:** James Brady

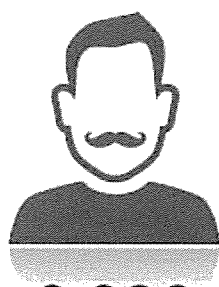
---

**From:** TheShout <[info@topshelfshow.com.au](mailto:info@topshelfshow.com.au)>  
**Date:** Thursday, 15 January 2015 10:12 am  
**To:** Janette Illingsworth <[janette.illingsworth@bluemountains.edu.au](mailto:janette.illingsworth@bluemountains.edu.au)>  
**Subject:** Top Shelf - Premium Drinks Festival returns for 2015

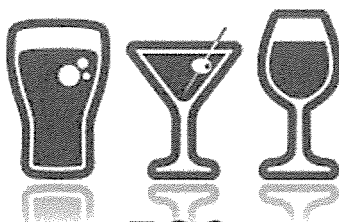
The latest news from TheShout | Please add us to your safe sender list and set images to always display.  
Having trouble reading this email, [click here](#) | [Send this email to a friend](#)



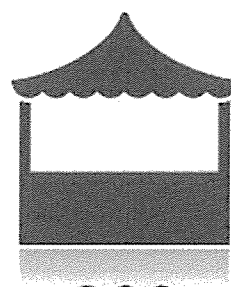
**It's time to book your stand at Top Shelf**  
*08-09 August 2015, Melbourne*



**8,000**  
Consumers & trade



**500**  
Premium drinks brands



**200**  
Stands

---

**40 Presentations – 2 Days – 1 Event**

---

*Top Shelf* is Australia's hottest premium drinks show returning to Melbourne Sat-Sun 08-09 August 2015 at the Royal Exhibition Building.

If your brand wants to engage affluent consumers and tap into trade focusing on premium drinks then *Top Shelf* is the show for you.

*Top Shelf* is cross category showcasing premium and boutique wines, craft and premium beers/ciders, artisan and premium spirits, non-alcoholic beverages and fine food.

To request a floor plan, rates and discuss getting involved in *Top Shelf* 2015 click the button below.

**CLICK FOR INFO**

---

---

**97% of visitors at Top Shelf rated it excellent, very good or good (46% excellent)**

---

---

**Reasons for attending Top Shelf 2014**

84% to try new products

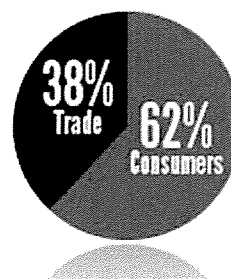
49% to meet and talk with producers/suppliers

46% to attend seminars and presentations

30% to purchase something special to drink at home

27% to network with industry colleagues

**Trade & Consumer split**



---

---

Contact **Shane T Williams** for more information

email: [stwilliams@intermedia.com.au](mailto:stwilliams@intermedia.com.au)

or phone: 0431 857 765

---

---

PLEASE NOTE: We are sending you this eDM because our records indicate that you have agreed to use this service under the terms and conditions set out by the publisher.

[Forward to a Friend](#) | [Update your profile](#) | [Unsubscribe](#)

This email was sent to [janette.illingsworth@bluemountains.edu.au](mailto:janette.illingsworth@bluemountains.edu.au) from TheShout  
w: [www.theshout.com.au](http://www.theshout.com.au) | e: [info@theshout.com.au](mailto:info@theshout.com.au)



Advertise with Us

TheShout is owned and operated by The Intermedia Group (ABN: 94 002 583 682)  
Ph: +61 2 9660 2113 W: [www.intermedia.com.au](http://www.intermedia.com.au) E: [info@intermedia.com.au](mailto:info@intermedia.com.au) Privacy & Copyright

**INTERMEDIA**